



Philips LED BikeLight

**SafeRide® E-bike
driven 60**

EF60L55 IP



Take control of your safety

5x more light than legally required

- Powered by automotive LUXEON® Altilon LED
- (60 LUX*): 2 light sources
- 160 lumen in the beam
- Crystal white light (5500 K)

Extra wide illumination

- Up to 50 meters homogeneous road illumination
- Foreground illumination
- Glare free beam (StVZO in Germany)
- Fulfills international motorcycle regulation ECE R113 class C
- High efficiency electronic driver
- Operates on 5 - 48 V DC, 5 W

Easy integration

- Retroreflector integrated into holder with K-approval
- Two versions available with different mechanical interfaces:
 - One version with handlebar bracket interface
 - One version with fork mounting interface

PHILIPS
sense and simplicity

Specifications

Packaging dimensions

- Number of products included : 1
- Gross weight : 213,750g
- Net weight : 180g

Outer packaging

- Number of products included: 40
- Gross weight: 8,55kg
- Net weight: 7,20kg
- Length: 58cm
- Width: 39,50cm
- Height: 18,80cm
- Volume : 43 070,80cm³

Country of origin : China

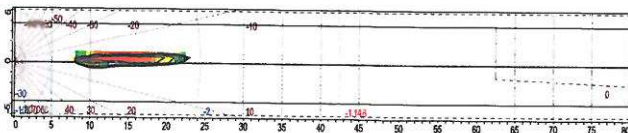
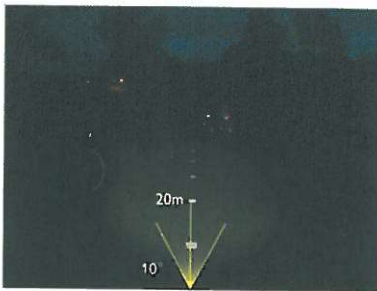
Highlights

- **Lux : 60** measured at 10m in the beam
- Power source: E-bike
- Light temperature : 5500 K
- Fore field illumination
- Length of beam : 50 m
- 4 minutes standlight function
- Glare free
- Waterproof
- Housing : metal
- Light output : 5x more light (than legally required), bright & wide beam for optimized vision
- Construction : 2 LUXEON® HighPower LEDs
- ECE R113 class C compliant
- Certification : StVZO
- REACH compliant
- RoHS compliant

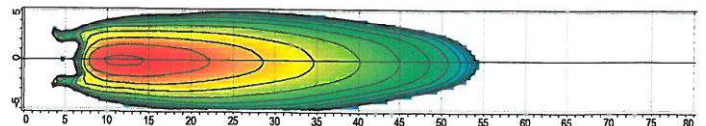
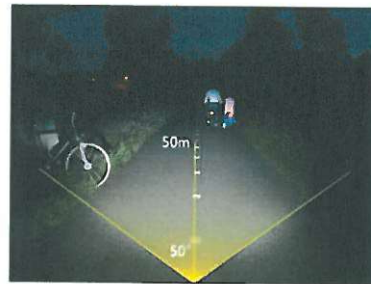
Ordering information

Description	12NC silver	12NC black	MOQ
SafeRide® LED BikeLight E-bike driven 60 fork interface	9282.207.17122	9282.208.17122	40
SafeRide® LED BikeLight E-bike driven 60 handlebar interface	9282.209.17122	9282.210.17122	40

Beam performance



Standard solution at 10 Lux



Philips SafeRide® E-bike at 60 Lux



© 2011 Koninklijke Philips Electronics N.V.
 All Rights reserved.
 Specifications are subject to change without notice.
 Trademarks are the property of Koninklijke Philips
 Electronics N.V. or their respective owners.

www.philips.com/bikelight